

1826 12TH STREET, NW

WASHINGTON, DC 20009



FIRST FLOOR
1,066 SQ FT

**Estimated Total Finished
Square Footage: 4,195 SQ FT**

Above-Grade: 3,160 SQ FT Below-Grade: 1,035 SQ FT
Plus 25 SQ FT Mech Room on Lower Level
Calculated per ANSI Standard Z765-2003.

* Estimated Total Finished & Unfinished Square Footage: 4,220 SQ FT



Rendering by Floor Plan Visuals.
All measurements are approximate. While deemed reliable, no information
on these floor plans should be relied upon without independent verification.

Liz D'Angelo
Tel: 202.427.7890
Email: liz.dangelo@wfp.com

Anne Shea
Tel: 512.940.4942
Email: anne.shea@wfp.com



1826 12TH STREET, NW

WASHINGTON, DC 20009



LOWER LEVEL



Rendering by Floor Plan Visuals.
All measurements are approximate. While deemed reliable, no information on these floor plans should be relied upon without independent verification.

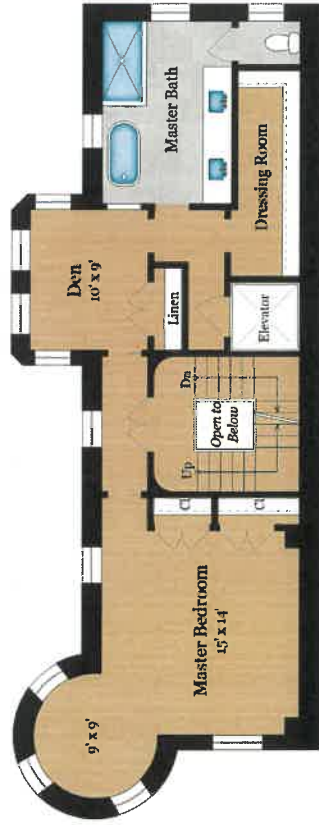
Liz D'Angelo
Tel: 202.427.7890
Email: liz.dangelo@wfp.com

Anne Shea
Tel: 512.940.4942
Email: anne.shea@wfp.com



1826 12TH STREET, NW

WASHINGTON, DC 20009



SECOND FLOOR
1,056 SQ FT



Rendering by Floor Plan Visuals.
All measurements are approximate. While deemed reliable, no information on these floor plans should be relied upon without independent verification.

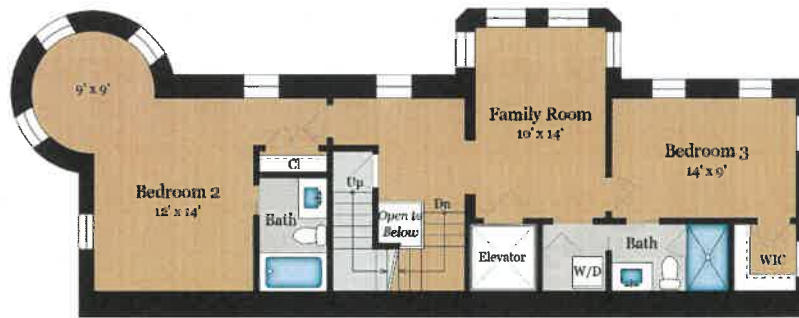
Liz D'Angelo
Tel: 202.427.7850
Email: liz.dangelo@wfp.com

Anne Shea
Tel: 512.940.4942
Email: anne.shea@wfp.com



1826 12TH STREET, NW

WASHINGTON, DC 20009



THIRD FLOOR



Rendering by Floor Plan Visuals.
All measurements are approximate. While deemed reliable, no information on these floor plans should be relied upon without independent verification.

Liz D'Angio
Tel: 202.427.7890
Email: liz.dangio@wfp.com



Anne Shea
Tel: 512.940.4942
Email: anne.shea@wfp.com